



PROPOSED URBAN LAND USE MAP

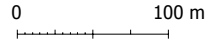
Municipality of Camalig

PROVINCE OF ALBAY

REGION V



Scale 1 : 5 000

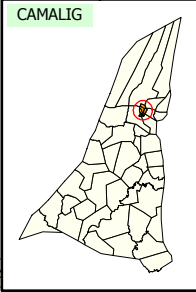


570500 m 570700 m 570900 m 571100 m 571300 m

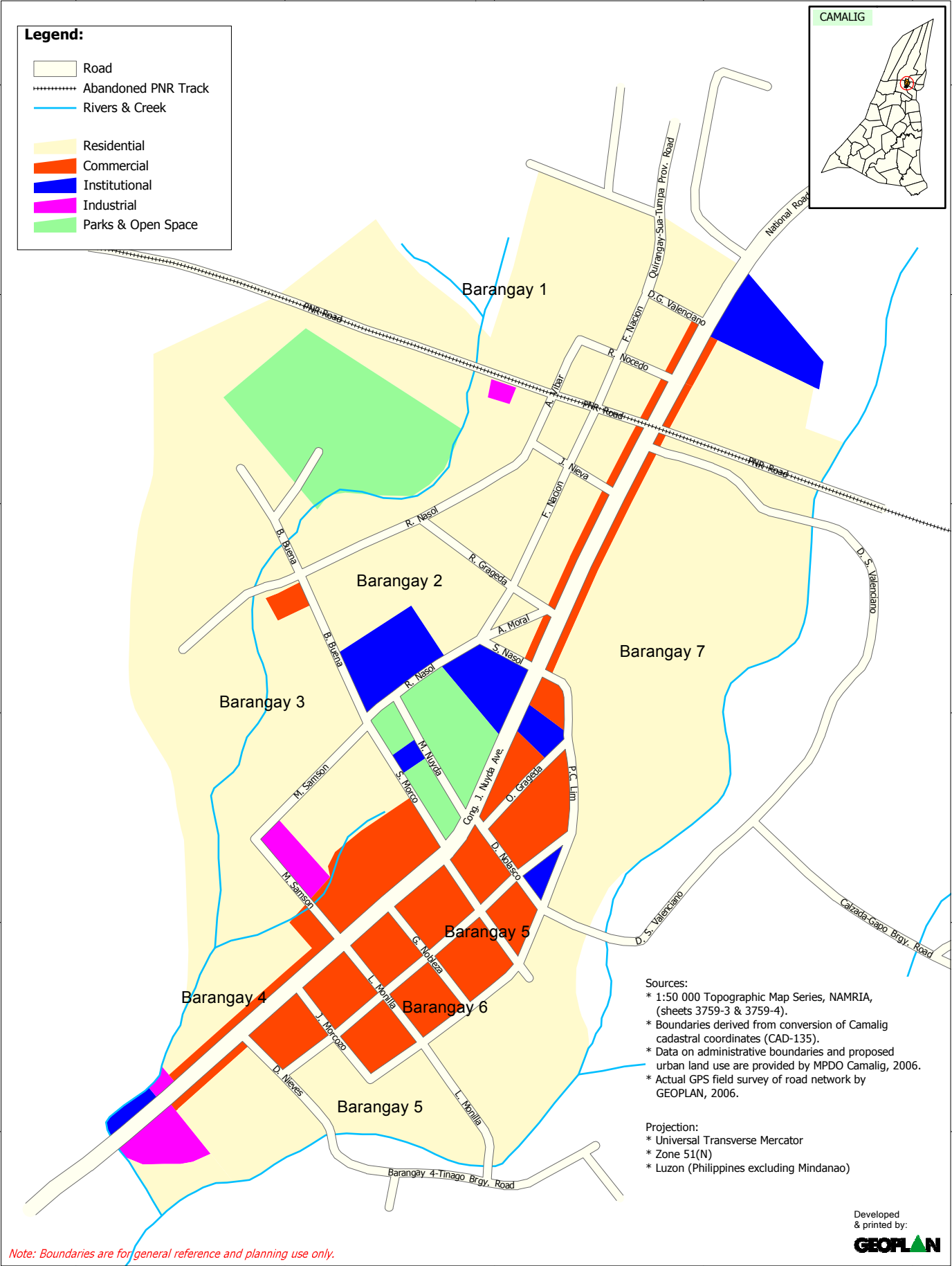
1458000 m
1457800 m
1457600 m
1457400 m
1457200 m
1457000 m

Legend:

- Road
- Abandoned PNR Track
- Rivers & Creek
- Residential
- Commercial
- Institutional
- Industrial
- Parks & Open Space



1458000 m
1457800 m
1457600 m
1457400 m
1457200 m
1457000 m



Sources:

- * 1:50 000 Topographic Map Series, NAMRIA, (sheets 3759-3 & 3759-4).
- * Boundaries derived from conversion of Camalig cadastral coordinates (CAD-135).
- * Data on administrative boundaries and proposed urban land use are provided by MPDO Camalig, 2006.
- * Actual GPS field survey of road network by GEOPLAN, 2006.

Projection:

- * Universal Transverse Mercator
- * Zone 51(N)
- * Luzon (Philippines excluding Mindanao)

Note: Boundaries are for general reference and planning use only.

570500 m 570700 m 570900 m 571100 m 571300 m