

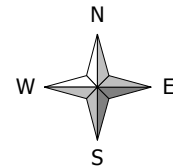


# DIGITAL TERRAIN MODEL

## Municipality of Camalig

PROVINCE OF ALBAY

REGION V



**Legend:**

- Barangay Hall
  - Schools
  - Health Station
  - Road
  - Abandoned PNR Track
  - Active PNR Track
  - River
  - Gridlines
- Elevation Range (Meters):**
- 2,100 - 2,500
  - 1,900 - 2,100
  - 1,600 - 1,900
  - 1,300 - 1,600
  - 1,100 - 1,300
  - 800 - 1,100
  - 500 - 800
  - 300 - 500
  - 40 - 300

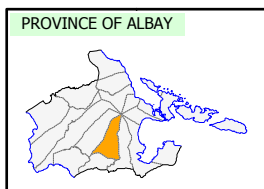
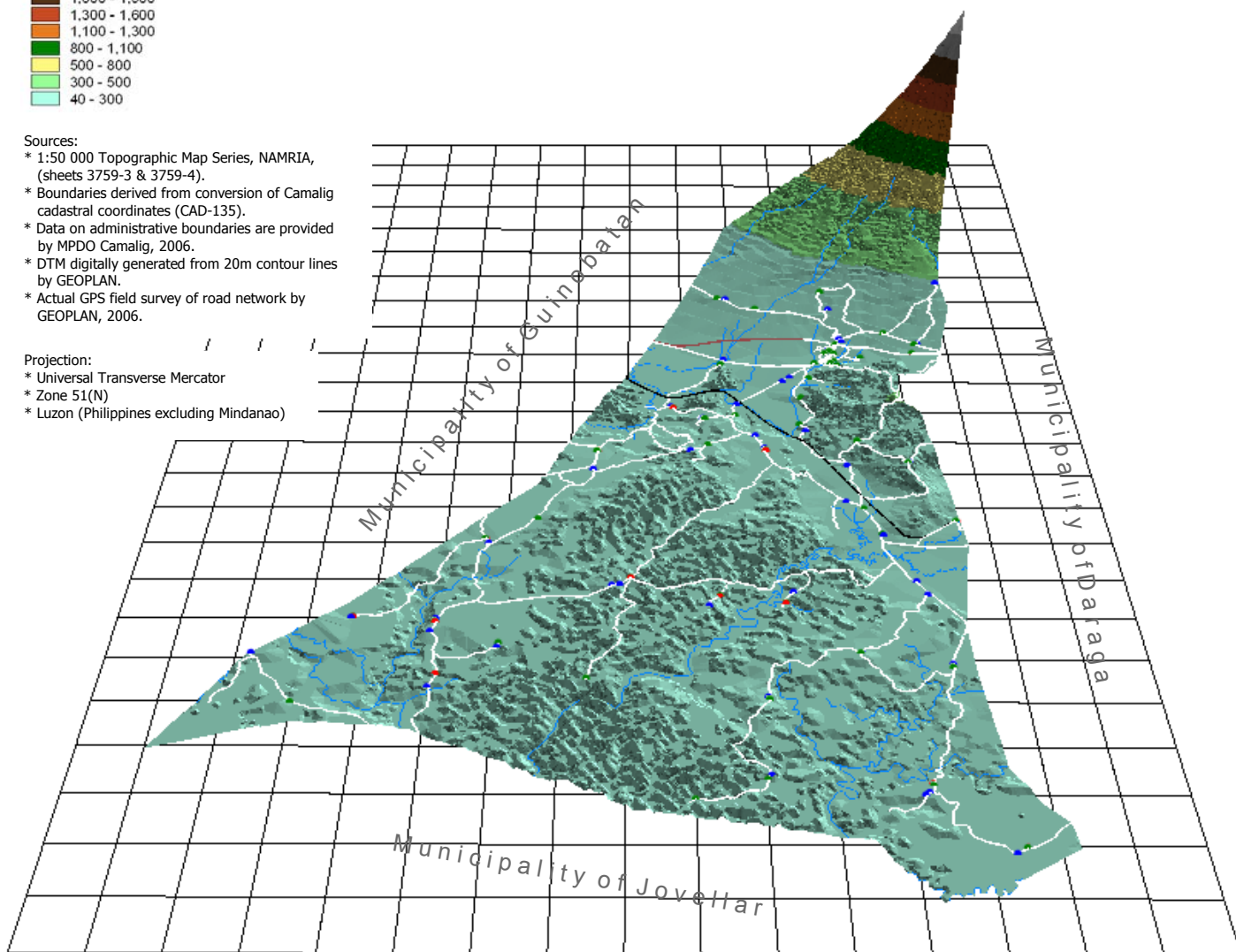
**Sources:**

- \* 1:50 000 Topographic Map Series, NAMRIA, (sheets 3759-3 & 3759-4).
- \* Boundaries derived from conversion of Camalig cadastral coordinates (CAD-135).
- \* Data on administrative boundaries are provided by MPDO Camalig, 2006.
- \* DTM digitally generated from 20m contour lines by GEOPLAN.
- \* Actual GPS field survey of road network by GEOPLAN, 2006.

**Projection:**

- \* Universal Transverse Mercator
- \* Zone 51(N)
- \* Luzon (Philippines excluding Mindanao)

Mt. Mayon Crater



*Note: Boundaries are for general reference and planning use only.*