



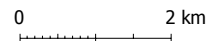
SLOPE MAP

Municipality of Camalig

PROVINCE OF ALBAY
REGION V



Scale 1 : 100 000



560000 m 565000 m 570000 m 575000 m

Mt. Mayon Crater

Legend:

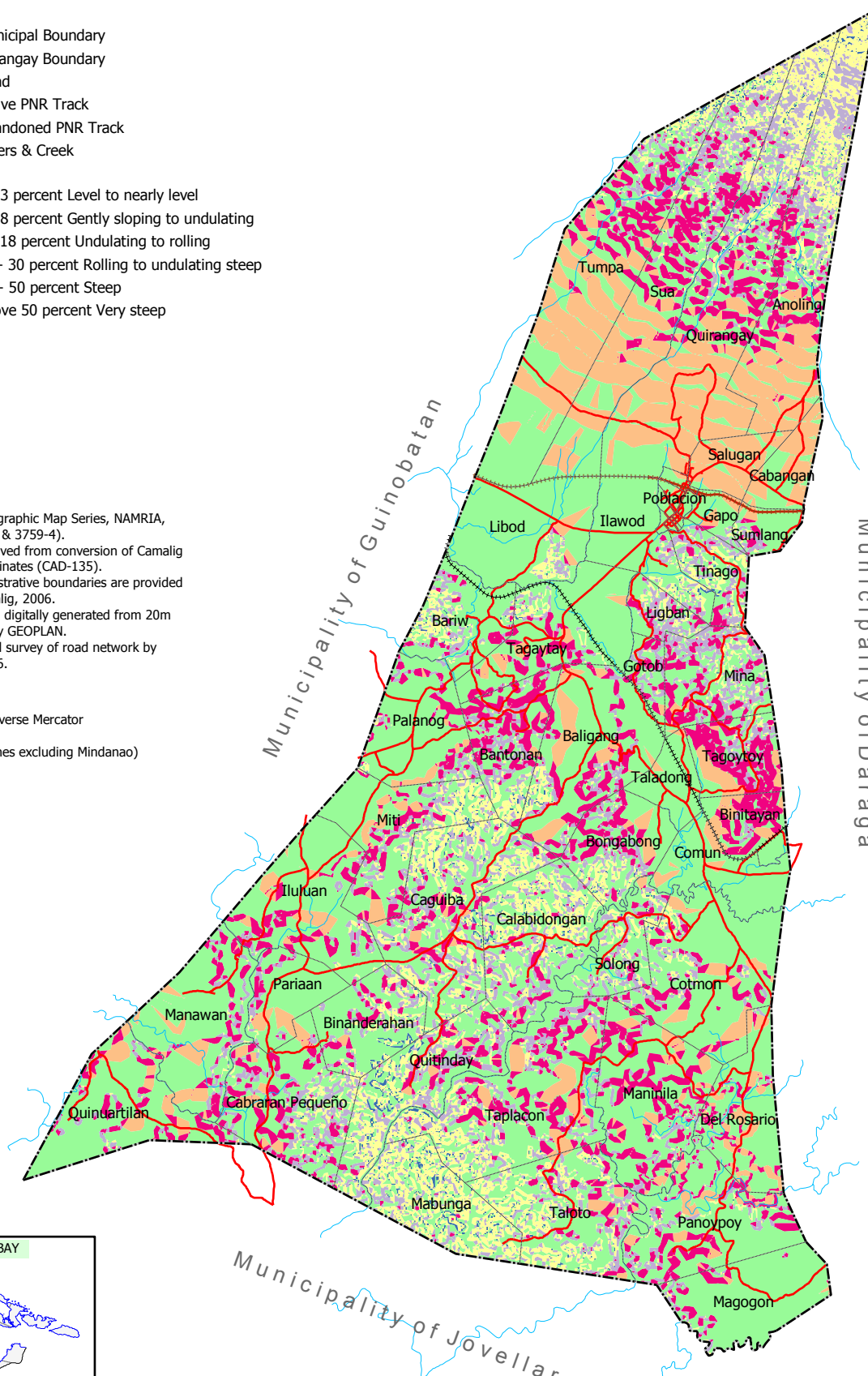
- Municipal Boundary
 - Barangay Boundary
 - Road
 - Active PNR Track
 - Abandoned PNR Track
 - Rivers & Creek
-
- 0 - 3 percent Level to nearly level
 - 3 - 8 percent Gently sloping to undulating
 - 8 - 18 percent Undulating to rolling
 - 18 - 30 percent Rolling to undulating steep
 - 30 - 50 percent Steep
 - above 50 percent Very steep

Sources:

- * 1:50 000 Topographic Map Series, NAMRIA, (sheets 3759-3 & 3759-4).
- * Boundaries derived from conversion of Camalig cadastral coordinates (CAD-135).
- * Data on administrative boundaries are provided by MPDO Camalig, 2006.
- * Slope map data digitally generated from 20m contour lines by GEOPLAN.
- * Actual GPS field survey of road network by GEOPLAN, 2006.

Projection:

- * Universal Transverse Mercator
- * Zone 51(N)
- * Luzon (Philippines excluding Mindanao)



1462500 m

1457500 m

1452500 m

1447500 m

1442500 m

1462500 m

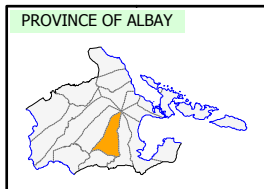
1457500 m

1452500 m

1447500 m

1442500 m

560000 m 565000 m 570000 m 575000 m



Note: Boundaries are for general reference and planning use only.

Developed & printed by:

