

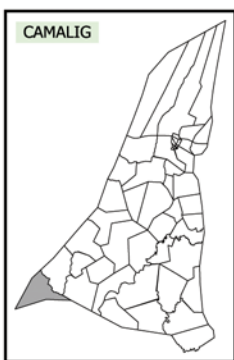
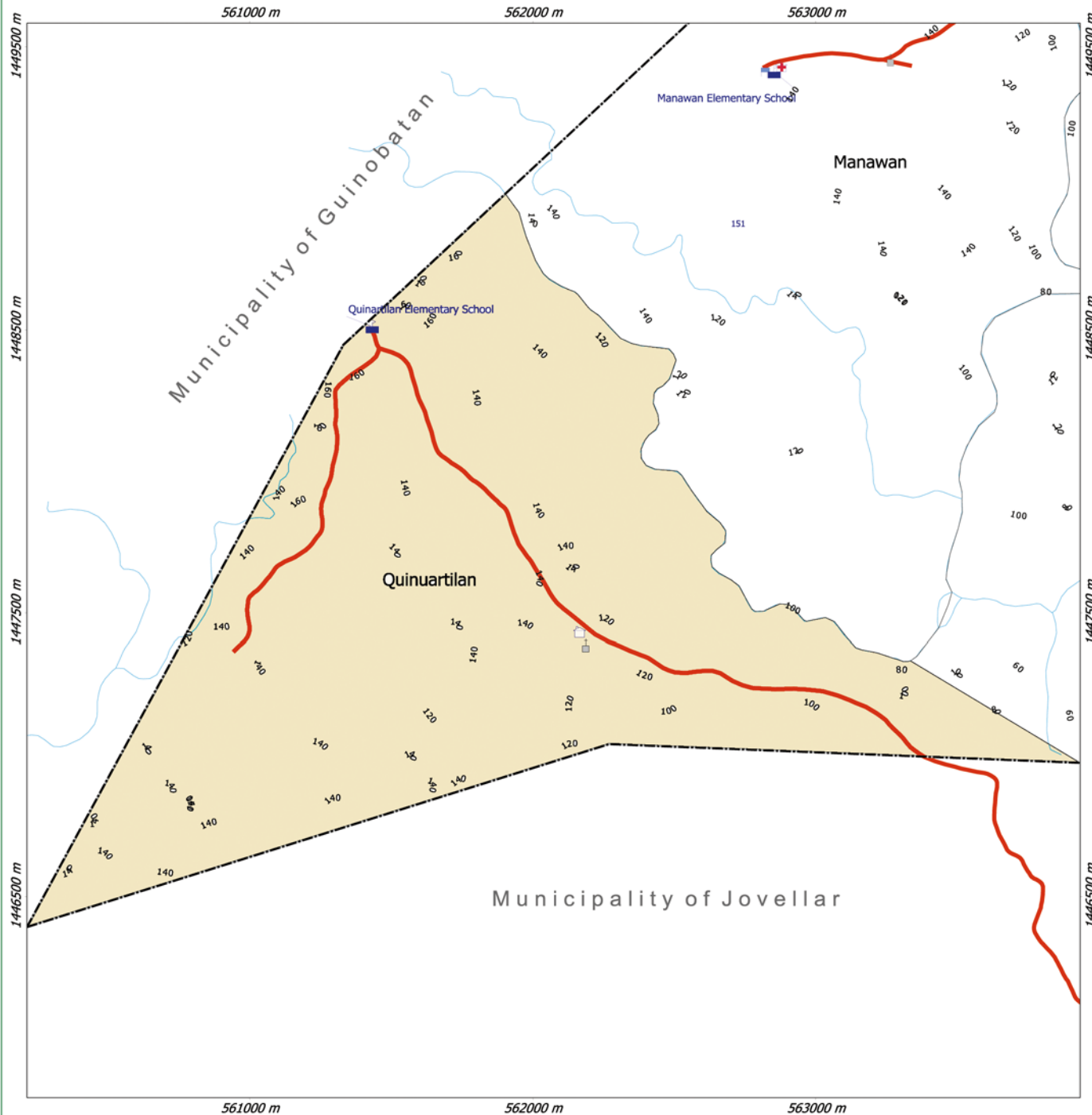
# BARANGAY QUINUARTILAN TOPOGRAPHIC MAP

## Municipality of Camalig

### PROVINCE OF ALBAY REGION V



0 400 m



**Legend:**

- Municipal Boundary
- Barangay Boundary
- Road
- Active PNR Track
- Abandoned PNR Track
- Rivers & Creek
- Spot Height (m)
- 100 m Contour Line Interval
- 20 m Contour Line Interval
- Depressed Contour Lines
- Supplementary Contour Lines
- Government Office
- Barangay Hall
- School
- Day Care Center
- Establishment
- Health Station
- Tourist Spot
- Church
- Chapel
- Parks & Recreation
- Cemetery
- Tower
- Bridge
- Others

Sources:  
 \* 1:50 000 Topographic Map Series, NAMRIA, (sheets 3759-3 & 3759-4).  
 \* Boundaries derived from conversion of Camalig cadastral coordinates (CAD-135).  
 \* Data on administrative boundaries are provided by MPDO Camalig, 2006.  
 \* Actual GPS field survey of road network and point locations by GEOPLAN, 2006.

Projection:  
 \* Universal Transverse Mercator  
 \* Zone 51(N)  
 \* Luzon (Philippines excluding Mindanao)



*Note: Boundaries are for general reference and planning use only.*